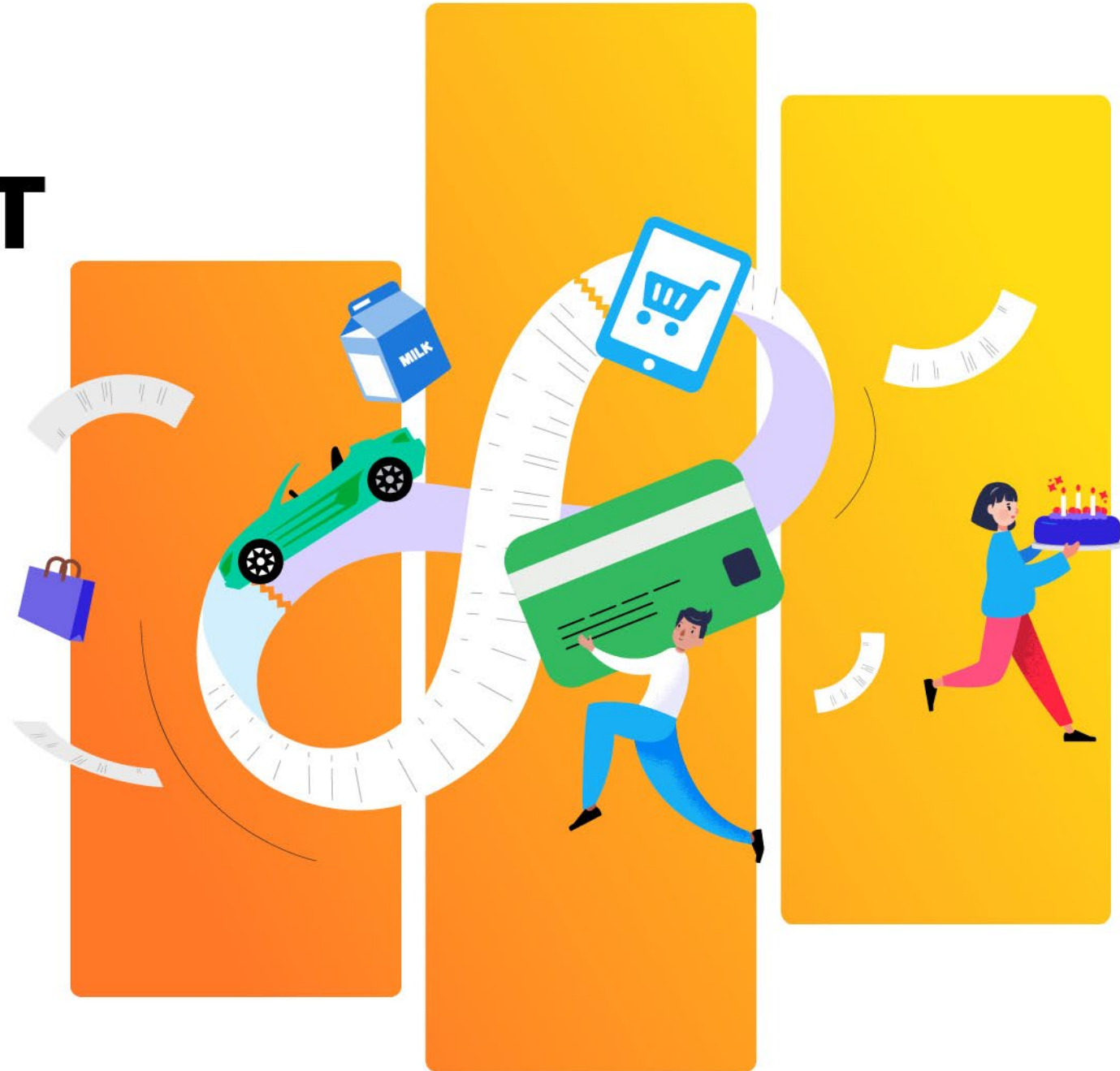


# National GST Conference

**17–18 October 2024**

**W Melbourne**

**13 CPD hours**



## The Tax Institute gratefully acknowledges the generous assistance of members of the Organising Committee:

Jonathan Ackerman, ATI, Ackerman Consulting

Elke Bremner, FTI, Co-chair, Organising Committee

Gordon Brysland, Australian Taxation Office

Anna Chong, CTA, KPMG

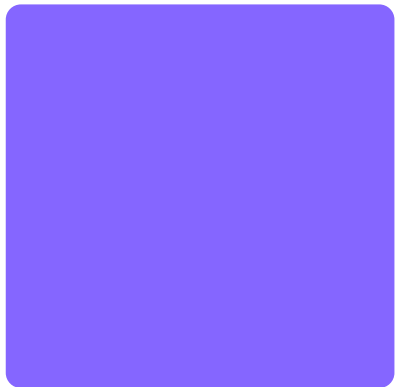
Bastian Gasser, ATI, Co-chair, Organising Committee

Ken Goodin, Australian Taxation Office

Jacqueline Hardwick, CTA, KPMG

Melissa Harrison, Australian Taxation Office

Sasha Smith, FTI, Deloitte





# Welcome

On behalf of the Organising Committee, we would like to extend warm welcome to The Tax Institute's National GST Conference for 2024 – Australia's pre-eminent event for GST practitioners and corporate advisory specialists.

This year the conference will be held at W Melbourne from 17-18 October 2024.

We're delighted to introduce our program for the year, featuring a diverse selection of themes which will deliver a holistic insight into the GST space, and provide practical guidance for challenges which may arise in day-to-day practice.

This year, we are honoured to welcome Commissioner Rob Heferen as our keynote speaker. As you are no doubt aware, Rob was appointed as the 13th Commissioner of Taxation on 1 March 2024. Rob has had a long career in the Australian Public Service, and over 35 years has accumulated diverse experience across policy development and program delivery in a range of portfolios such as tax policy, tax legislation and revenue forecasting. Relevantly, he played a part in the design of the GST system in the late 1990s.

There will also be practical panel sessions as part of the program, bringing together experts from the ATO and industry on hot button issues – from Build to Rent to food and medical device classification.

The networking function at W Melbourne offers attendees the opportunity to reconnect with colleagues and make new connections with others in the field.

We look forward to welcoming you in person in Melbourne in October.



**Elke Bremner, FTI**  
Co-chair, National GST Committee



**Bastian Gasser, ATI**  
Co-chair, National GST Committee

**Early bird pricing offer**  
**Register on or before 23 September to save!**

# Technical program

**Day 1** Thursday, 17 October 2024

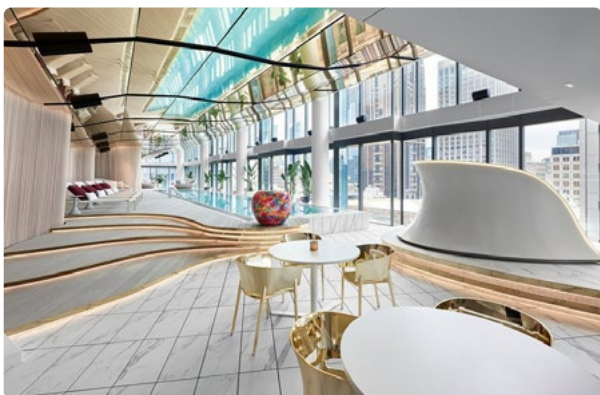
Time	Session
8:00 – 8:25am	Registration
8:25 – 8:30am	<b>Welcome and President’s address</b> Speakers: Elke Bremner, Ashurst, Co-Chair of National GST Committee, Todd Want, CTA, President, The Tax Institute
8:30 – 9:30am	<b>Session 1: Keynote address</b> Speaker: Rob Heferen, Commissioner of Taxation, Australia Taxation Office
9:30 – 10:30am	<b>Session 2: Relationships are hard – GST input tax credit recovery following the <i>Hannover Life Re</i> decision</b> Speaker: Matthew Strauch, CTA, PwC <p>This session will present a discussion on the current state of GST input tax credit recovery following the Full Federal Court decision in <i>Commissioner of Taxation v Hannover Life Re of Australasia Pty Ltd</i> [2024] FCAFC 23. This discussion will revisit the principles of input tax credit recovery derived from GST statute and case law and explore the key concepts and interpretation issues in detail, considering the approach to those concepts in light of the <i>Hannover Life Re</i> decision and how the issues may further evolve in the future.</p>
10:30 – 11:00am	Morning tea
11:00 – 12:00pm	<b>Session 3: Build-to-Rent: A holistic view on ensuring the asset class can be sustainable in Australia</b> Panelists: Jennee Chan, CTA, Corrs Chambers Westgarth, Nathan Deveson, CTA, MinterEllison, Rebecca Healy, Mirvac, Steve Whittington, Ashurst Facilitator: Elke Bremner, FTI, Ashurst <p>It is common knowledge that Australia is in the midst of a housing affordability crisis, with various factors such as insufficient supply, high interest rates, supply chain constraints and increased construction costs all contributing to the current status. There is no question that in order to achieve a functional housing market, there needs to be a diversity of housing supply, with Build-to-Rent housing being a logical part of the solution.</p> <p>This panel session will consider perspectives from industry and advisers on the challenges that the asset class is currently facing, not just from a GST perspective, but from an income tax and state taxes perspective, and potential improvements to ensure the viability of the sector.</p>
12:00 – 1:00pm	<b>Session 4: Contractual and commercial disputes and GST – Learnings from recent cases</b> Speaker: Chris Sievers, VIC Bar <p>This session will provide an overview of key learnings from recent decisions including:</p> <p>Disputes between commercial parties regarding to GST</p> <ul style="list-style-type: none"><li>• The <i>Nerang Subdivision</i> case</li><li>• Waterfall clauses in DMA/PDA contexts</li><li>• Impact of GST withholding payments and credits</li></ul> <p>Modifying GST implications of a transaction through contractual drafting</p> <ul style="list-style-type: none"><li>• The <i>Konebada</i> case; and</li><li>• Partnership/agency/Tripartite Arrangements.</li></ul>



# Technical program

**Day 1** Thursday, 17 October 2024 *continued*

Time	Session
1:00 – 2:00pm	Lunch
2:00 – 3:00pm	<b>Session 5: Public advice on the GST classification of food and health products</b> <b>Speakers:</b> Lisa Chatfield, EY, George Nikolaou, Coles Group, AC Andrea Wood, Australian Taxation Office This session will examine issues and challenges with GST classification in the food and medical space. As a result of ATO focus over the last few years, a number of issues have arisen in relation to the application of GST-free status to food and medical products. The panel will discuss compliance challenges in the context of current ATO public commentary and ATO audit activities as well as practical and commercial challenges being faced by taxpayers in navigating the current compliance environment.
3:00 – 3:30pm	Afternoon tea
3:30 – 4:30pm	<b>Session 6: Economic update</b> <b>Speaker:</b> Cherelle Murphy, EY This session will offer a comprehensive overview of the current state of the Australian economy, focusing on the impact of economic conditions on GST policy. Attendees will gain an understanding of economic trends, and why international conditions, weakness in household consumption and inflation make changes to GST difficult.
4:30 – 5:30pm	<b>Session 7: ATO update for public and multinational businesses</b> <b>Speakers:</b> Virginia Gogan, Australian Taxation Office, Rebecca Saint, Australian Taxation Office This session will outline the ATO's vision for GST compliance for public and multinational businesses, provide some key insights into the GST risk focus areas and set out future directions for ATO engagement.
5:30 – 7:30pm	Networking function



## Networking function

Join colleagues, peers and speakers for an evening of drinks, canapes and networking.

**Date:** Thursday, 17 October 2024

**Time:** 5:30–7:30pm

**Venue:** W Melbourne

**Price:** Included for full registration delegates  
Additional tickets are \$80 per person, see registration form for details

**Dress:** Business-Casual

# Technical program

**Day 2** Friday, 18 October 2024

Time	Session
8:30 – 9:30am	<p><b>Session 8: International perspective and reflections</b> Speaker: Roderick Cordara KC, New Chambers Sydney</p> <p>This session compare and contrast our GST system with VAT regimes elsewhere on the nexus back to input taxed supplies required to block credit access. In particular, he will address recent cases and what he describes as ‘the importance of telling the story of the business’ in litigation. Roderick will also comment on British VAT generally after Brexit and what VAT changes might be expected with the incoming Labour government.</p>
9:30 – 10:30am	<p><b>Session 9: Artificial Intelligence</b> Speaker: Lyria Bennett Moses, UNSW</p> <p>This session will describe some of the main types of artificial intelligence (AI), considering both their utility and their limitations in the contexts of use in legal practice and by government. It will also highlight some of the ideas emerging around the broad heading of AI ethics, including developments in standards and assurance frameworks. Finally, the session will briefly highlight legal considerations, including in the contexts of privacy, confidentiality and access.</p>
10:30 – 11:00am	<b>Morning tea</b>
11:00 – 12:00pm	<p><b>Session 10: The challenges of luxury car tax administration</b> Speakers: Gordon Brysland, Australian Taxation office, William Reid, Australian Taxation Office</p> <p>Luxury car tax continues to present a number of administrative and legal challenges. Taxpayers have sought to test the scope of various key provisions. There is also an increasing trend towards structured arrangements aimed at optimising the use and application of quoting and adjustment provisions. Join us to hear from Gordon about the long and winding road from the tribunal to the High Court in the <i>Automotive Invest</i> case. This session will also cover ATO perspectives on current and emerging risks and challenges.</p>



# Technical program

## Day 2 Friday, 18 October 2024 continued

Time	Session
12:00–1:00pm	<p><b>Session 11: Enterprise and the property developer</b> Speaker: Rhys Penning, Grant Thornton</p> <p>This session will explore the inherent tension between the taxpayer and the ATO in characterising the taxpayer’s activities – a tension that is usually a function of their desired outcome. Rhys will use a property development case study to tease out issues such as:</p> <ul style="list-style-type: none"><li>• Does MT 2006/1 still reflect best thinking in light of the subsequent case law (up to and including Nerang and Lance in 2024)</li><li>• Is it possible that a series of activities is “in the form of a business”, but fall short of in fact being a business? What about an adventure in the nature of trade? Are there other consequences to be kept in mind? and</li><li>• The impact of intentions changing over time and how evidence influences analysis and findings of fact.</li></ul>
1:00–2:00pm	<b>Lunch</b>
2:00–3:00pm	<p><b>Session 12: GST – Speed update</b> Speaker: Nick Wootton, KPMG, Victoria Yessayan, CTA, KPMG</p> <p>This presentation will answer the “so what/why should I care” of the latest GST developments in:</p> <ul style="list-style-type: none"><li>• Case law;</li><li>• Public advice and guidance; and</li><li>• Practical administration.</li></ul>
3:00–3:30pm	<b>Afternoon tea</b>
3:30–4:30pm	<p><b>Session 13: E-Invoicing implementation</b> Speakers: Carole McTavish, Australian Post, Warren Meyer, Deloitte, Mark Stockwell, Australian Taxation Office Facilitator: Sasha Smith, Deloitte</p> <p>We are seeing increased adoption of e-Invoicing across many jurisdictions globally as we move to transform to a truly integrated digital economy. This session will include content and a panel discussion providing an overview of e-Invoicing international experiences and insights, perspectives on the Australian landscape and journey so far, including the economic benefits to e-Invoicing as well as insights on the technology to deliver.</p>
4:30pm	<b>Conference close</b>

# Presenters

**Lyria Bennett Moses** is a Professor and Head of School of Law, Society and Criminology in the Faculty of Law and Justice at UNSW Sydney. She is also co-lead of the Law and Policy theme in the Cyber Security Cooperative Research Centre and Faculty Lead, Law and Justice in the UNSW Institute for Cyber Security. Lyria's research explores issues around the relationship between technology and law, including the types of legal issues that arise as technology changes, how these issues are addressed in Australia and other jurisdictions, and the problems of treating "technology" as an object of regulation. Recently, she has been working on legal and policy issues associated with the use of artificial intelligence (including a coauthored report on AI Decision-Making and Courts for the Australasian Institute of Judicial Administration, and ongoing work on standards through Standards Australia), and the appropriate legal framework for enhancing cyber security (through the Cyber Security Cooperative Research Centre). Lyria is a member of the editorial boards for Technology and Regulation; Law, Technology and Humans; Journal of Cross-Disciplinary Research in Computational Law; and Law in Context. She is on the Executive Committee of the Australian Chapter of the IEEE's Society for the Social

Implications of Technology and is a Fellow of the Australian Academy of Law and the Royal Society of NSW.

**Elke Bremner** is a Partner in the Tax practice at Ashurst. Elke advises on all areas of indirect tax including GST, stamp duty, land tax, payroll tax and other State based taxes. Elke's practice includes advising on a broad range of GST and stamp duty issues in respect of business and share sale agreements, takeovers and corporate reconstructions, insolvency and restructuring, foreign investment and transactions involving real estate and build-to-rent developments. Elke is a Fellow of the Taxation Institute of Australia, the Deputy Chair of the Property Council of Australia's NSW Tax and Economic Trends Committee and an active committee member of the Indirect Tax Committee. Elke has also been recognised as a Tax Rising Star in numerous legal directories such as Doyle's Guide, IFLR and Euromoney's Expert Guide.

**Gordon Brysland** is an Assistant Commissioner in the Office of the Chief Tax Counsel responsible for technical GST and related issues. He is a fellow of the Australian Academy of Law and has practised in indirect tax for over 30 years. Gordon is the author of over 100 articles on tax and public law

issues, most recently – Classification; principles, practice & the future (his keynote address from last year). Gordon also produces interpretation NOW! as a website resource on statutory interpretation generally.

**Jennee Chan, CTA**, is a Partner at Corrs Chambers Westgarth, specialising in indirect taxes. She is experienced in advising on GST, stamp duty and other property tax issues. Jennee's practice is largely transactional, in particular, public and private mergers and acquisitions, property development and infrastructure projects as well as transactions in the natural resources sector.

**Lisa Chatfield** is a Director in EY's Indirect Tax practice with over 15 years experience advising on Goods and Services Tax and Fuel Tax matters. Lisa advises both domestic and international clients across a number of sectors including Mining, Oil and Gas, Consumer Products, Construction and Property. In combination with her traditional GST advisory and compliance skillset, Lisa also manages and delivers large Indirect Tax automation and data analytics projects for domestic and international clients with single or multi-jurisdictional GST/VAT profiles. In addition to implementing technology solutions, Lisa also assists with the overarching

tax risk management and governance requirements for these projects.

**Roderick Cordara KC, SC**, is an international grandmaster of indirect tax, with an extremely busy tax commercial practice pursued in the UK, across Europe and also in Australia. He is an accomplished and elegant public speaker with the ability to disarm almost any resistance with his simple and clear propositions. In Europe, he appears on VAT and related matters in all courts, including the Supreme Court (previously the House of Lords) and before the European Court of Justice. Roderick has been involved in countless important appeals and has had considerable influence in development of the law. One notable success before the House of Lords in 2001 was Card Protection Plan. In Australia, Roderick has practiced in the middle of GST right from the very beginning. He appeared for the Commissioner in the seminal HP Mercantile litigation in 2005 (which he won). Roderick has also been involved in a range of other important GST cases, including Luxottica, Travelex, Qantas and AP Group. He is co-author (with Pier Parisi) of the textbook Australian GST Cases- Decisions and Commentary (2012). There is hardly any zone of the GST law that he has not advised extensively on.



# Presenters

**Nathan Deveson, CTA**, is a former Sydney Managing Partner and leads MinterEllison's Real Estate Structuring and State Tax practice. He is a leading advisor on complex real-estate transactions specialising in transaction structuring, and also on State Tax issues (stamp duty and land tax) across the country for other sectors (including M&A, financial services and mining & resources). He is a member of the Property Council of Australia's Build to Rent Roundtable.

**Virginia Gogan** is a Senior Director in Public Groups for the GST Hub. In this role Virginia is responsible for holistically understanding the GST risks which arise for public and multinational businesses, and actively designing and driving initiatives to address these risks, to reduce the GST gap and provide certainty to taxpayers.

**Rebecca Healy** is Director, Indirect Taxes for Mirvac Group. She is a qualified legal practitioner with over 20 years' experience. Prior to joining Mirvac in 2014, Rebecca was in private practice advising clients across a broad range of industries and sectors including property, government, retirement living and financial services. She is actively involved in advocacy on key tax policy matters for the property industry through her role as Chair of the Property

Council of Australia's Indirect Taxes Committee and NSW Tax Committee.

**Rob Heferen** commenced as Commissioner of Taxation on 1 March 2024. Rob has over 35 years' of diverse experience in the Australian Public Service. His career spans across policy development and program delivery in varied portfolios, and he has represented Australia in international forums including the United Nations, the International Energy Agency and the Organisation for Economic Co-operation and Development. Rob is regarded as one of the nation's most experienced tax experts, and for almost two decades his interest and expertise in economics and tax policy has led to senior executive roles at the Australian Taxation Office and Commonwealth Treasury. Rob holds a Bachelor of Arts (Hons) and Bachelor of Laws from the University of Tasmania, and a Graduate Diploma of Economics from the Australian National University.

**Warren Meyer** is a Director in Deloitte's Tax Technology Team with over 20 years of consulting experience in transformation and technology solutions. He has a proven track record in leading strategy, transformation, and operating model programs for large organisations. As a leader in e-Invoicing, Warren specialises in delivering large-scale e-Invoicing

and e-Reporting projects. His expertise spans both government and public entities, including a current focus on the broader Asia Pacific region as e-Invoicing mandates are rolled out. Warren's experience extends across the full delivery lifecycle, assisting clients with their e-Invoicing strategy, design, and roadmap through to implementation and adoption. His expertise and leadership have made him a pivotal figure in driving e-Invoicing initiatives and ensuring they are integrated into the order-to-cash and procure-to-pay processes and technology ecosystems.

**Cherelle Murphy** is EY Oceania Chief Economist. She helps clients to understand and interpret the economic backdrop. Cherelle uses her commercial acumen, public sector experience and analytical skills to see through the noise, giving clients timely insights and helping to identify risks and opportunities that the changing phases of the business cycle bring. Cherelle publishes regularly and is a trusted advisor in economic and policy issues for domestic and international clients and stakeholders. Prior to EY, Cherelle was Chief Economist at Austrade, helping guide Australian Government policy in trade, foreign investment and tourism. Cherelle also spent 15 years at ANZ Bank, having started her career as an economic research analyst at the Reserve Bank of Australia. She also worked as

a journalist for the Australian Financial Review. Cherelle holds a Bachelor of Commerce (Hons) from Curtin University and a Master of Population Studies from Australian National University. She is a graduate of the Australian Institute of Company Directors and a member of Chief Executive Women.

**George Nikolaou** commenced his career as a graduate in the ATO in 1982 and soon after joined the Sales Tax Branch. In 1985 George joined Deloitte and later PWC where he practised in Sales Tax and other indirect taxes. In 1990 George joined Coles Myer as their Manager of Sales Tax until 1998 when he was called upon to join the GST Implementation Team. Since that time George has headed up the Coles Indirect Tax team with particular focus on GST and also looks after Wine Equalization Tax, Payroll Tax, Foreign Resident Withholding Tax and Excise. George has managed a number of GST audits by the ATO and in recent years finalised two Justified Trust Reviews. George was a foundation member of the ATO's GST Stewardship committee and served on that committee for more than 10 years. George is a part of the ATO's Food Classification Discussion group and its Alcohol Taxes Forum. During his career, George was involved in several Sales Tax classification cases and one of the early GST cases on Leasing and the GST Transition provisions.

# Presenters

**Rhys Penning** is a highly experienced GST professional, with 25 plus years of practice in legal and Big4 firms, both in Australia and Dubai. Working with a diverse range of clients over an extended period, with a focus on Real Estate and property development, Rhys is exceptionally well placed to provide deep analysis of the most difficult issues. He has broad industry exposures and brings his expertise, knowledge and judgement to deliver practical and implementable solutions for clients in the face of any challenge. Over many years, Rhys was an active member of the Property Council's GST subcommittee and the Retirement Living Council's Tax committee and has been involved in many Government and ATO consultations.

**William Reid** is a technical officer in the ATO's Excise Centre. Will joined the ATO in 2008, working in financial crime, with a focus on egregious offshore-structures and trust arrangements. Since 2019, Will has worked within the Excise Centre specialising in Luxury Car Tax.

**Rebecca Saint** is Deputy Commissioner for Public Groups- Client Experience in the Public Groups business line. In this role Rebecca is responsible for overseeing tax administration and compliance for public and multinational groups. She plays a key role in the Tax Avoidance

Taskforce leading compliance programs targeted at ensuring that the largest businesses operating in Australia pay the right amount of tax. Rebecca also leads the advisor strategy which focuses on the role that intermediaries play in supporting large business.

**Christopher Sievers** practises primarily in revenue law, with a particular focus on GST. Since being called to the Bar in 2001, Chris has developed a substantial advice practice and has appeared on behalf of taxpayers and the Revenue in numerous matters, including the High Court in Reliance Carpet, Qantas and Travellex No.2.

**Mark Stockwell** is leading the government's eInvoicing initiative, resulting in several billion dollars of productivity benefits to the Australian economy. Mark collaborated with New Zealand in 2019 to form the Trans-Tasman eInvoicing initiative which led to the adoption of the international Peppol standard to support the initiative. Prior to this Mark was a program manager for the government's SuperStream initiative, delivering significant benefits to Employers and Superannuation funds. A common theme to Mark's career has been large scale economy change driven by digital adoption and is underpinned by his extensive relationships with key stakeholders.

**Matthew Strauch, CTA**, is a Tax Partner at PwC and leads its National Indirect Taxes practice, with over 25 years' experience in advising on indirect taxes in both Australia and the UK. Matt advises in all areas of Australian GST with a specific focus on the financial services and advising on M&A and transactions. He also regularly advises clients on GST governance, technology and operations and has significant experience in assisting clients in relation to ATO reviews

**Steve Whittington** is a partner in the direct tax practice at Ashurst. Steve advises on a wide range of tax matters, with a focus on funds, real estate acquisitions, mergers and acquisitions, and financial arrangements. His expertise in advising on the establishment of funds extends to commercial office, build to rent, hotels, logistics, retail, and infrastructure. Steve has participated heavily in the consultation process relating to thin capitalisation, including as a representative of the Property Council's Capital Markets Committee.

**AC Andrea Wood** is an Assistant Commissioner in the ATO and she leads the Technical Leadership and Advice – GST branch. This ATO branch is responsible for GST public and private advice for all client types as well as advice that supports GST compliance,

objection, litigation, and new law matters. Andrea has over 20 years' experience in tax policy, law and administration. In previous roles in the ATO's Tax Counsel Network, Andrea provided legal advice on GST, cryptocurrency and international tax issues, including the Multinational Anti-Avoidance Law and the OECD's Base Erosion and Profit Shifting Project. Prior to this, Andrea worked at The Treasury on tax treaty policy issues and treaty negotiations.

**Victoria Yessayan, CTA**, is a Director in the GST Advisory team at KPMG. Victoria has over 16 years' experience in advising on the technical and commercial implications of Australian GST. With a focus in financial services, Victoria assists a range of clients in the asset and wealth management, banking, property and insurance sectors across a full range of GST technical matters. Victoria's experience includes GST system and process reviews, managing ATO's Combined Assurance Reviews and Specific Risk Reviews, navigating specific industry risks, GST data testing and advising on structuring/merger transactions.

# Venue and accommodation



## W Melbourne

408 Flinders Lane, Melbourne, Victoria 3000

Melbourne's first luxury lifestyle hotel with its rebellious Flinders Lane address, W Melbourne takes its design cues from the streets of Australia's cultural capital. We hold the back-lane entrance keys to what's New/Next in the city, revealing a playground where the early risers to the late-night revellers can turn up the tracks in this dynamic city. The joy of discovery is what underpins the design narrative at W Melbourne. Each space exhibits its own personality as the rawness of industry gives way to elegance and an array of sensory triggers that reveal unexpected delights.

### Getting there

W Melbourne is approximately 10 minutes' walk from both Flinders Street and Southern Cross railway Station.

### Parking

W Melbourne provides a limited amount of valet parking spaces for hotel guests only. This is at a cost of \$70 per car, per day. Please note valet parking is strictly subject to availability and cannot be guaranteed. To access valet car parking, you enter via Wheels at 408 Flinders Lane.

Alternately, self-parking is available in a number of the public car parks surrounding the hotel

### Secure parking

522 Flinders Lane – Open 7 days/Fri-Sat 24 hours. For more information on availability and rates click [here](#).

376 Flinders Street – 6:00–22:00 – 7 days For more information on availability and rates click [here](#).

### Wilson Parking

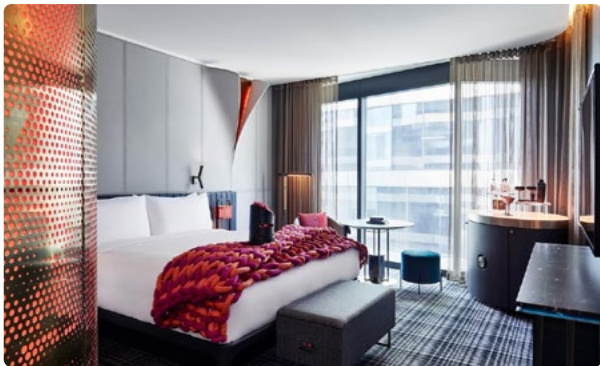
425 Collins Street – Open 24/7 For more information on availability and rates click [here](#).

Please note public rates apply. Please contact car park companies direct for full details.

### Accommodation

Favourable room rates have been negotiated and secured at W Melbourne. Accommodation bookings can be made by following the link on the even web page or by clicking: [here](#).

Please note that as per hotel booking conditions, all accommodation booked is non-refundable. All additional hotel incidentals, including breakfast, remain the responsibility of delegates, and individuals will be responsible for payment of the balance of their account when checking out of the hotel. Please note that extra charges may be incurred for additional guests and will be charged to individual room accounts upon checkout.



# Event information

## Confirmation of registration

Please note you will receive two separate emails in the form of a tax invoice at the time of payment and a confirmation email at registration completion.

## Continuing Professional Development (CPD)

Attendance at the conference counts for 13 hours of CPD with The Tax Institute.

## The Tax Institute's attendee hub

Program information, materials (technical papers and presentations), survey forms and more will be available via The Tax Institute's virtual attendee hub. All delegates are encouraged to access the platform prior to the event. Technical papers and PowerPoint presentations will be available on the attendee hub to all participating delegates approximately five days before the event. Delegates will receive instructions on accessing the virtual attendee hub by email.

## Delegate list

A delegate list will be included on the attendee hub to assist with networking. Please indicate at the time of registration if you do not want your name to be included. Alternatively, you can edit your profile visibility settings in the virtual attendee hub at any time during the event.

## Dress code

Business or business casual attire is suitable for the duration of the conference.

## Special dietary and accessibility requirements

Please indicate any special dietary requirements at the time of registration. Please email us with any accessibility requirements at [nationalevents@taxinstitute.com.au](mailto:nationalevents@taxinstitute.com.au)

## Networking function

A networking function will be held directly following the last session on Thursday from 5.30pm at W Melbourne. The networking function is included in the conference registration fee for delegates. Additional tickets are available to purchase for accompanying persons at a cost of \$80. Please indicate your requirements, including dietary requirements, at the time of registration.

## Special dietary and accessibility requirements

Please indicate any special dietary requirements at the time of registration. Please email us with any accessibility requirements at [nationalevents@taxinstitute.com.au](mailto:nationalevents@taxinstitute.com.au).

## Cancellation policy

The Tax Institute reserves the right to alter, amend or cancel all or any of the arrangements contained in the program. Should a face-to-face event be cancelled due to an event beyond The Tax Institute's reasonable control including 'an act of god', 'pandemic', 'health-related event' or 'government requirements', we will endeavour to transition to an online format to deliver the event. If there is a difference in price, a credit will be provided to delegates to be used at a future event.

It is a condition of acceptance of registration that an administration fee of 20% of the registration fee be charged for cancellation if you can no longer attend the event. Cancellations must be received in writing by The Tax Institute five working days prior to the event. No refund will be given for cancellations received within five working days of the event. A replacement may be nominated. If the replacement is not a member, the non-member registration fee will apply. CPD hours will be allocated to the designated attendee.

The Tax Institute cannot accept responsibility for delegates' late transport arrivals or non-arrivals due to delays.

## Privacy

We take your privacy seriously, and our policy can be viewed at: <https://www.taxinstitute.com.au/about-us/privacy-copyright-disclaimer>.

## Enquiries

For further information regarding this event, please contact the Events Team on 1300 829 338 or [nationalevents@taxinstitute.com.au](mailto:nationalevents@taxinstitute.com.au).

For registration enquiries, please contact [customeradmin@taxinstitute.com.au](mailto:customeradmin@taxinstitute.com.au).



# Registration

## Registration inclusions

	Online access to presentations and technical papers	Morning/ afternoon tea/ conference lunches	Conference networking function*
<b>Full registration</b> This registration option entitles one delegate to attend the entire event.	✓✓	✓✓	✓✓

\*Additional tickets to the networking functions can be purchased on the registration form.

## Discounts

### Early bird registration

All registrations received and paid on or before 23 September will be entitled to an early bird discount.

**Please note:** The registration fee does not include accommodation, hotel incidentals or transfers.

### Group discounts

Purchase four full registrations (early bird or standard) and receive a fifth full registration for free. The free fifth registration must be of equal or of less value to the four paid registrations.

This offer cannot be redeemed in conjunction with any other promotional offer or code. All attendees must be from the same firm and all registration forms must be submitted together. For further information please contact the national events team on 1300 829 338 or [nationalevents@taxinstitute.com.au](mailto:nationalevents@taxinstitute.com.au).

## Register now!

**Register online** ▶

**Register via form** ▶  
included in this brochure





A tax invoice and confirmation letter will be sent on receipt of your registration. Please photocopy for additional delegates and retain original copy for your records. All prices quoted are in Australian dollars and include GST where applicable. ABN 45 008 392 372.

## 1 Registration

Please see page 13 for registration inclusions.

### Full registration – 13 CPD hours

	Member	New member*	Non-member
<b>Early bird registration</b> Register on or before 23 September	<input type="checkbox"/> \$1,800	<input type="checkbox"/> \$2,190	<input type="checkbox"/> \$2,100
<b>Standard registration</b> Register after 23 September	<input type="checkbox"/> \$2,000	<input type="checkbox"/> \$2,390	<input type="checkbox"/> \$2,300

I understand that the registration fees do not include printed materials. Access to materials will be electronic.

### Networking function

The networking function is INCLUDED in the registration fee for delegates attending the full conference.

#### Thursday, 17 October 2024 at the W Melbourne

- Yes, I WILL be attending the networking function OR  
 No, I WILL NOT be attending the networking function  
 Yes, I require additional tickets for the networking function at \$80 per person

No.  x tickets at \$80 each: \$

Dietary requirements:

## 2 Delegate contact details

Member no.:

If your member details are up-to-date, you can skip this section.

Title:  Mr  Mrs  Miss  Ms      Date of birth:

First name:

Last name:

Position:

Company:

Address:

Suburb:       State:       Postcode:

Telephone:       Mobile:

Email:

Please tick this box if you do not wish your name to be included on the delegate list provided to all attendees for networking

### \*Become a member and save!

Not a member of The Tax Institute yet? Sign up for membership along with your event registration and:

- save over \$220 on Affiliate membership for the first 12 months
- access member-only prices to this and future events
- access all member-only technical resources.

Find out more about membership at  
[taxinstitute.com.au/membership](http://taxinstitute.com.au/membership)

I hereby apply for membership of The Tax Institute and declare that I am a person of good fame, integrity and character. I agree to be bound by the Constitution of The Tax Institute.

Signature:

Date of signature:

JOIN TODAY

### 3 Payment summary

Registration fees \$

Additional guest tickets – Networking function (\$80) \$

**Total payable** \$

Please note: The Tax Institute cannot accept responsibility for delegates' late flight arrivals. Transfer costs are non-refundable and non-transferable.

### 4 Payment method

Please note: all registration payments must be made prior to the event, unless other arrangements have been made with The Tax Institute.

**Cheque payable to The Tax Institute** (in Australian dollars)

**Credit card** Card type:  AMEX  Visa  MasterCard  Diners

Name on card:

Card no.:  Expiry date:

Cardholder's signature:

For our refund, cancellation and replacement policy visit [taxinstitute.com.au/professional-development/event-policy](http://taxinstitute.com.au/professional-development/event-policy).

For event enquiries, please contact the National Events Team on **1300 829 338** or [nationalevents@taxinstitute.com.au](mailto:nationalevents@taxinstitute.com.au)

For registration enquiries, please contact [customeradmin@taxinstitute.com.au](mailto:customeradmin@taxinstitute.com.au)

**Collection notice:** The Tax Institute (TTI) complies with its obligations under the Privacy Act 1988 (Cth) with respect to how it handles personal information. For information on how TTI collects, uses, holds and discloses personal information, please see its privacy policy at [www.taxinstitute.com.au](http://www.taxinstitute.com.au). [You can also request TTI's consultants to provide you with a copy of TTI Privacy Policy.] By submitting your application to TTI, you confirm that you have read TTI's Privacy Policy and you consent to your personal information being collected, used and held by TTI and disclosed to third parties in accordance with TTI's Privacy Policy.





**To register**

Email [customeradmin@taxinstitute.com.au](mailto:customeradmin@taxinstitute.com.au)

Mail Level 21, 60 Margaret Street, Sydney NSW 2000

Online [taxinstitute.com.au](http://taxinstitute.com.au)

Join the conversation

-  [linkedin.com/school/the-tax-institute](https://www.linkedin.com/school/the-tax-institute)
-  [facebook.com/thetaxinstitute](https://www.facebook.com/thetaxinstitute)
-  [twitter.com/taxinstituteoz](https://twitter.com/taxinstituteoz)
-  [instagram.com/thetaxinstitute\\_](https://www.instagram.com/thetaxinstitute_)

